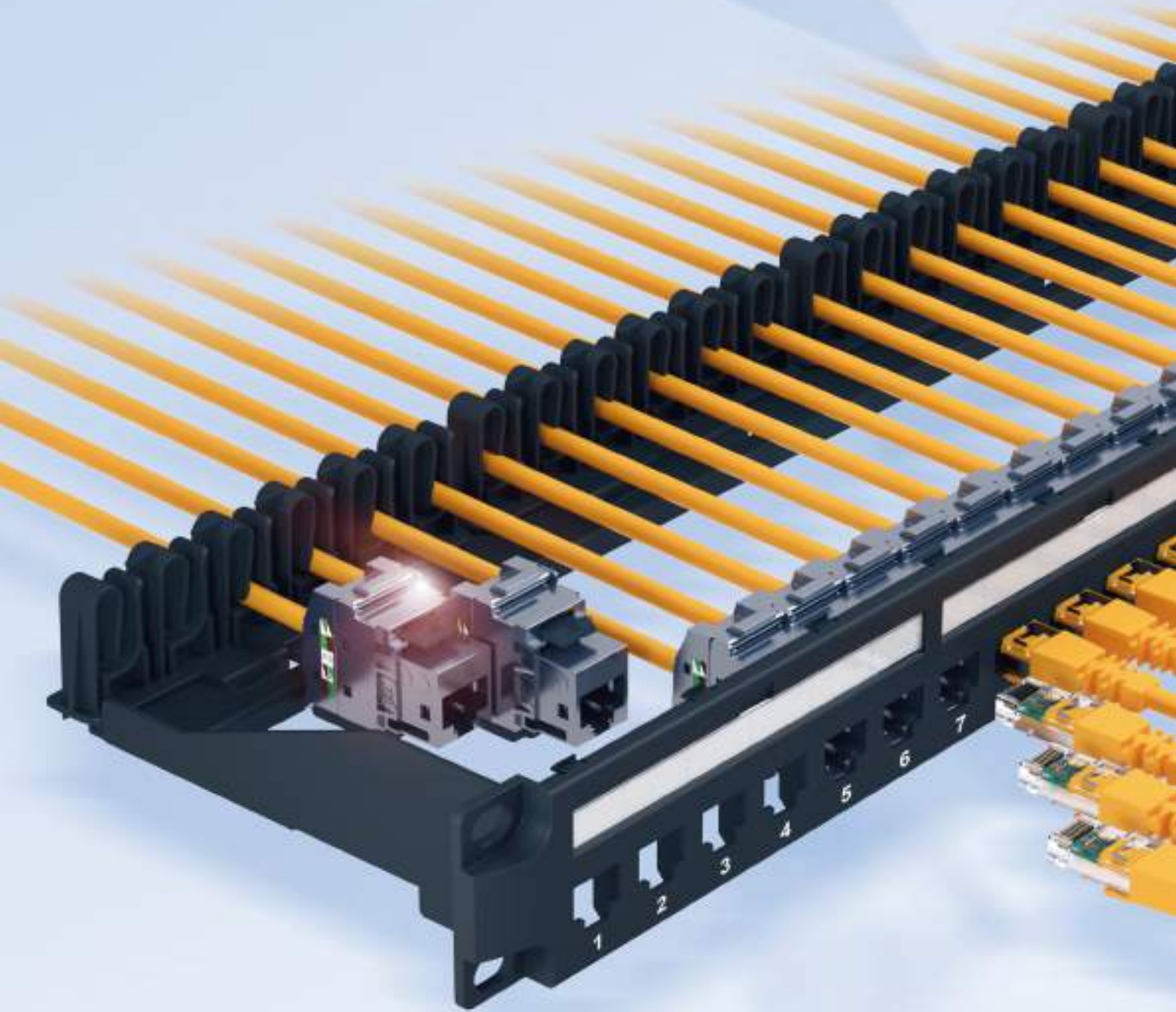


# Legrand Cabling Solution

Build connection



GLOBAL SPECIALIST IN ELECTRICAL  
AND DIGITAL BUILDING INFRASTRUCTURES

 **legrand**<sup>®</sup>

# A superlative connector

*The new LINKEO C system brings to market a toolless keystone connector enabling fast connection in all categories from 5e to 6A. Simple and quick to terminate, its one-touch locking guarantees superior reliability for data transmission. Eco-designed and minimalist, its packaging reduces unpacking and waste: 100% neutral cardboard, no more plastic. ■*



## Designed to speed up your work

The innovative design of the LINKEO C keystone connector meets the expectations of professionals for simplicity and ease of installation. Its ergonomic design enables quick toolless connection. A greater comfort for reduced effort. It's easy to connect, disconnect and reconnect with no damage to the product. ■

**LOCKING TAB** : The colour code of the locking tab indicates the category – 5e, 6 or 6A – of the connector.




**Push down the lever. Safely lock the connector.**

**LEVER** : The optimized size and ergonomic shape of the lever means less pressure is required to manipulate it. A little of effort saved with each connection.

The design of the connector eliminates any risk of accidental opening. Its mechanical locking clip secures the termination and transmission of data. Simply disconnect and reconnect.

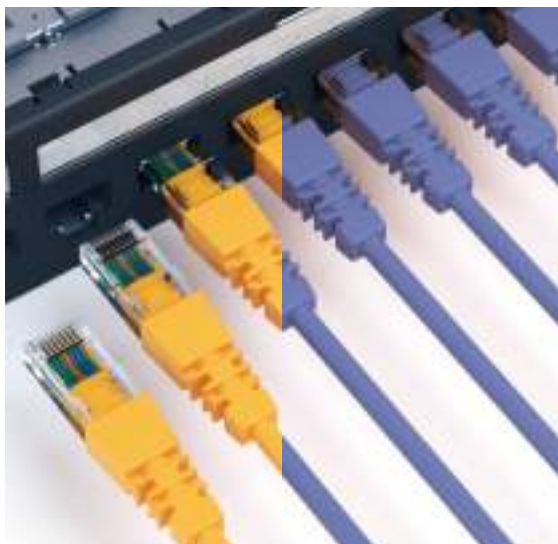
**JACK** : The jack and the lever can be separated to ease the process of re-termination.




 **Fast termination and re-termination**

LINKEO C keystone connector is designed to make every step of the installation and maintenance process quick and easy. Each connector can be terminated under **1 minute 10 seconds**. And disconnected and re-terminated, without tools or any damage, in a matter of seconds. Connectors stay ready to use, again and again. ■

***"Hearing your priorities in the field, we understand your need to optimize installation time."*** A Legrand design manager, Saint-Marcellin site in France



 **From 5e to 6A, the right performance for any client's need**

From patch panels to terminal sockets, cables and cords, LINKEO C offers a complete range of equipment to create high-performance digital infrastructures.

At the heart of the system is the RJ 45 connector, available in all categories, from 5e to 6A, in shielded or unshielded versions. A colour code helps you identify them at a glance. ■

<b>Cat. 6A STP/UTP</b>	<b>10 Gbits/s</b>	Anthracite grey locking tab
<b>Cat. 6 STP/UTP/FTP</b>	<b>1 Gbit/s</b>	Light grey locking tab
<b>Cat. 5e STP/UTP</b>	<b>1 Gbit/s</b>	White locker locking tab



  
**100% RECYCLED**

 **Reduce waste, save time**

Legrand has been committed to preserving the environment for long time. To intensify its efforts to reduce its carbon footprint, **the group is using 100% recycled cardboard packaging and is gradually eliminating plastic packaging from its products.**

That's why all LINKEO C products are delivered in 100% recycled cardboard packaging, without plastic film and ready to use. **This means you don't waste time unpacking the equipment and you reduce your on-site waste.** ■

 To know more about this point, watch the tutorial: Packaging presentation

# A super-efficient and caring system

*Our designers paid particular attention to the ergonomics of the new LINKEO C range. They focused on minimizing any discomfort or inconvenience associated with the repetitive handling of connectors and panels. And they simplified the execution of installation and maintenance operations. It's time to embrace a new ergonomic design that improves your comfort and your performance at work. ■*



## Pre-position panels for a quick look

LINKEO C's designers listened to your needs and created a system that meets your on-site requirements. They've optimized steps, simply and efficiently.

For example, you're able to pre-position any LINKEO C patch panels in the uprights to get a global overview of your installation. See a way to simplify your installation? Do it quickly and easily. No need to unscrew panels or disconnect any cords or cables. These little things save you time. ■



To know more watch the tutorial: Patch panel presentation



### Pre-hold panels without fixing them

Designed to speed up your work, the LINKEO C patch panel facilitates installation and maintenance. Simply insert it into the uprights of the cabinet without screwing it in. It holds in place. You can now easily carry out all your operations. Screw each panel in place once everything is properly connected. ■



### Easy cable management

LINKEO C patch panel comes with a rear cable management system as standard that lets you simply organize cables, providing a neat and clean installation. On the back of the panel for example, several cable guides keep cables organized and properly routed through the cabinet. A practical solution that facilitates maintenance routines and limits inadvertent disconnects. ■



### Ensuring end-to-end connectivity

Data socket adaptor for single Keystone connector ; white, 2 modules, marking area for an easy identification of the computer network. You can install it for snap-on trunking and column offers, desktop and under-desk multi-outlet ranges, floor, flush and surface mounting boxes. ■



## Install for the long run

Confident in the quality of our solutions, Legrand guarantees the performance of our copper and fiber cabling systems for 25 years.

Subject to certain conditions, the “**25-YEAR PERFORMANCE WARRANTY**” provides assurance of correct functioning of the **LEGRAND STRUCTURED CABLING SOLUTIONS** for a period of twenty-five years. ■

# LINKEO C - structured cabling solutions

patch panels, keystone, surface mounting box and socket outlets



6 328 50



6 329 05



6 329 08



6 329 11



6 327 95



6 327 99



6 329 01

Pack	Cat.Nos	Patch panel to be equipped
1	6 328 50	Empty patch panel for 24 keystone connectors cat. 6 <sub>A</sub> , cat. 6 or cat. 5e with metal cable holder To be equipped with RJ 45 connectors
		<b>Keystone connectors</b>
		Set of 24 RJ 45 connectors Keystone toolless RJ 45 connector Accepts from AWG 23 to AWG 26 solid and stranded conductors Contacts marked with dual colour code for wiring schemes T 568 A and T 568 B Conforms to standards ISO/IEC 11 801 series ANSI/TIA 568 series EN 50173 series
1	6 329 05	<b>Cat. 6<sub>A</sub> RJ 45 connectors</b> Set of 24 RJ45 connectors category 6A STP Keystone
1	6 329 06	Set of 24 RJ45 connectors category 6A UTP Keystone
1	6 329 07	<b>Cat. 6 RJ 45 connectors</b> Set of 24 RJ45 connectors category 6 STP Keystone
1	6 329 08	Set of 24 RJ45 connectors category 6 FTP Keystone
1	6 329 09	Set of 24 RJ45 connectors category 6 UTP Keystone
1	6 329 10	<b>Cat. 5e RJ 45 connectors</b> Set of 24 RJ45 connectors category 5e STP Keystone
1	6 329 11	Set of 24 RJ45 connectors category 5e UTP Keystone

Pack	Cat.Nos	Keystone faceplates
		<b>RJ 45 Linkeo faceplates</b>
14	6 327 94	1 port
14	6 327 95	2 ports
14	6 329 00	4 ports
		<b>Angled RJ 45 Linkeo faceplates</b>
14	6 327 96	1 port
14	6 327 97	2 ports
		<b>Surface mounting box</b>
1	6 327 99	1 or 2 ports For keystone connectors Provides solution for integration of keystone in surface mounting installations
		<b>Socket outlet adaptors + RJ 45 connectors</b>
		Set of 10 outlets (45 x 45 mm 2 modules, 1 port) and 10 RJ 45 connectors
10	6 329 01	With RJ 45 cat. 6 <sub>A</sub> STP
10	6 329 02	With RJ 45 cat. 6 FTP
10	6 329 03	With RJ 45 cat. 6 UTP
10	6 329 04	With RJ 45 cat. 5e UTP
		<b>Patch panel telephone 50 ports 110 connect</b>
1	0 335 79	High density: supports 50 ports using 1 U of rack space Compatible with 22-26 AWG 19" panel - 1 U

# Legrand cabling system, LCS<sup>3</sup> offer

## Patch panels, connectors, accessories



0 337 92



0 337 90



0 337 58



0 337 94



0 337 63



0 337 56



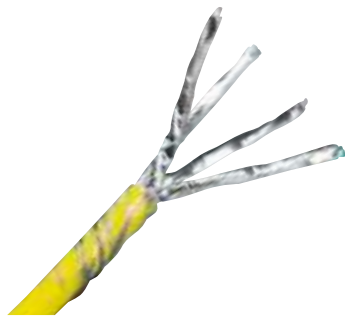
0 337 59

Pack	Cat.Nos	Flat patch panels
1	0 337 90	<p>Complete with new generation Quick-Fix for automatic mounting (no screws required) on cabinets or enclosures. Universal mounting on any cabinet or enclosure. Ensure automatic earthing of each connector. Equipped with rear cable guide to hold the cables during maintenance</p> <p><b>Flat patch panel with empty cassettes to be equipped with 24 connectors</b> Equipped with 4 automatic extraction cassettes for cat. 5e to cat. 6A RJ 45 connectors 19" panel - 1 U</p>
1	0 337 93	<p><b>Flat high density patch panel with empty cassettes to be equipped with 48 connectors</b> Equipped with 4 automatic extraction cassettes for cat. 5e to cat. 6 RJ 45 connectors 19" panel - 1 U</p>
<b>Angled patch panels</b>		
1	0 337 92	<p>Complete with new generation Quick-Fix for automatic mounting (no screws required) on cabinets or enclosures. Universal mounting on any cabinet or enclosure. Ensure automatic earthing of each connector. Equipped with rear cable guide to hold the cables during maintenance</p> <p><b>Angled patch panel to be equipped with 24 connectors</b> For cat. 5e to cat. 6A RJ 45 connectors 19" panel - 1 U</p>
1	0 337 94	<p><b>Angled high density patch panel to be equipped with 48 connectors</b> For cat. 5e to cat. 6A RJ 45 connectors 19" panel - 1 U</p>

Pack	Cat.Nos	RJ 45 connectors for LCS <sup>3</sup> patch panels only
1	0 337 75	Set of 6 Cat. 6A STP connectors
1	0 337 73	Set of 6 Cat. 6A UTP connectors
1	0 337 65	Set of 6 Cat. 6 STP connectors
1	0 337 64	Set of 6 Cat. 6 FTP connectors
1	0 337 63	Set of 6 Cat. 6 UTP connectors
1	0 337 54	Set of 6 Cat. 5e FTP connectors
1	0 337 53	Set of 6 Cat. 5e UTP connectors
<b>Common accessories for flat and angled panels</b>		
10	0 337 56	<p><b>Port blanking modules</b> Divisible 6 port blanking plate for sealing from 1 to 6 ports label holder for identification</p>
1	0 337 59	<p><b>Cord management</b> For use with new generation Quick-fix Provide side cord management Set of 2 pieces</p>
<b>Specific accessories for angled panels</b>		
1	0 337 58	<p><b>Angled panel cover</b> For optimized management of the air flow inside the cabinet</p>

# Legrand cabling system, LCS<sup>3</sup> cat. 6A

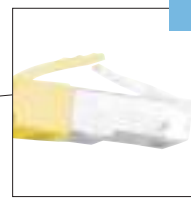
## cables and cords



0 327 77



0 517 82



Easy grip

Pack	Cat.Nos	Cables for local networks Cat. 6A
500 <sup>1</sup>	0 327 87	<p><b>LSZH</b></p> <p>Cables 4 pairs or 2 x 4 twisted pairs 100 Ω LSZH sleeve: halogen-free Yellow RAL 1018 Colour code TIA/EIA Conform to standards ISO/IEC 11 801 Ed. 2.0, EN 50173 and TIA/EIA 568C</p> <p><b>U/UTP - 4 pairs</b> Length 500 m. Supplied on reel. Weight 35 kg Euroclass Dca</p>
500 <sup>1</sup>	0 327 78	<p><b>F/UTP - 4 pairs</b> Length 500 m. Supplied on reel. Weight 29.2 kg Euroclass Dca</p>
500 <sup>1</sup>	0 328 78	<p><b>F/UTP - 2 x 4 pairs</b> Length 500 m. Supplied on reel. Weight 58 kg Euroclass Dca</p>
500 <sup>1</sup>	0 328 83	<p><b>F/FTP - 4 pairs</b> Length 500 m. Supplied on reel. Weight 76 kg Euroclass Cca</p>
500 <sup>1</sup>	0 328 84	<p><b>U/FTP - 4 pairs</b> Length 500 m. Supplied on reel. Weight 39 kg Euroclass Cca</p>

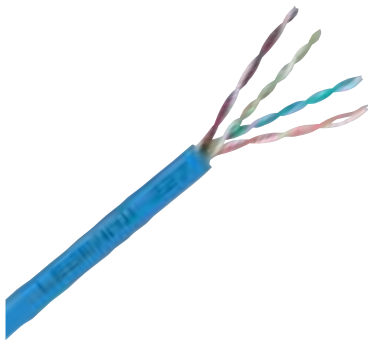
1: in metre(s)

Pack	Cat.Nos	RJ 45 patch cords and user cords Cat. 6A
1	0 518 82	<p>RJ 45/RJ 45 - right Conform to standards ISO/IEC 11 801, Ed. 2.0, EN 50173 and TIA/EIA 568C</p> <p><b>U/UTP unshielded impedance 100 Ω</b></p> <p>PVC</p> <p>Length 1 m</p>
1	0 518 83	Length 2 m
1	0 518 84	Length 3 m
1	0 518 85	Length 5 m
1	0 518 78	<p><b>LSZH</b></p> <p>Length 1 m</p>
1	0 518 79	Length 2 m
1	0 518 80	Length 3 m
1	0 518 81	Length 5 m
1	0 518 74	Length 1 m
1	0 518 75	Length 2 m
1	0 518 76	Length 3 m
1	0 518 77	Length 5 m
1	0 518 16	<p>PVC</p> <p><b>S/FTP shielded impedance 100 Ω</b></p> <p>Length 0.5 m</p>
5	0 517 80	Length 1 m
5	0 517 81	Length 2 m
5	0 517 82	Length 3 m
5	0 517 83	Length 5 m
1	0 518 70	<p><b>LSZH</b></p> <p>Length 1 m</p>
1	0 518 71	Length 2 m
1	0 518 72	Length 3 m
1	0 518 73	Length 5 m
1	0 518 66	Length 1 m
1	0 518 67	Length 2 m
1	0 518 68	Length 3 m
1	0 518 69	Length 5 m
1	0 515 50	<p><b>LSZH</b></p> <p>RJ 45/RJ 45 right</p> <p><b>S/FTP</b></p> <p>Length 0.5 m</p>
1	0 515 51	Length 1 m
1	0 515 52	Length 2 m
1	0 515 53	Length 3 m
1	0 515 54	Length 5 m

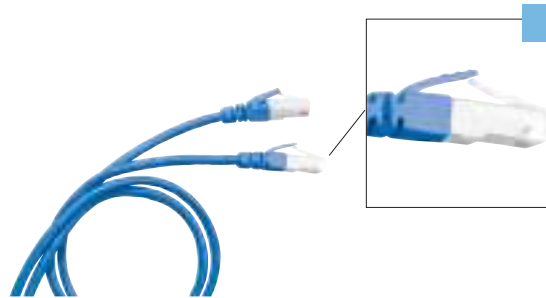


# Legrand cabling system, LCS<sup>3</sup> cat. 6

cables and cords



0 327 54



0 517 62

Pack	Cat.Nos	Cables for local networks Cat. 6
		Cables with 4 pairs or 2 x 4 twisted pairs, 100 Ω Blue RAL 5015 Colour code TIA/EIA Conform to standards ISO/IEC 11 801, Ed/ 2.0, EN 50173-1 and TIA/EIA 568C
		<b>U/UTP - 4 pairs</b>
305 <sup>1</sup>	0 327 54	Length 305 m Supplied in cardboard box. Weight 14 kg
500 <sup>1</sup>	0 328 61	Length 500 m Supplied on reel. Weight 19 kg
305 <sup>1</sup>	0 327 55	Length 305 m Supplied in cardboard box. Weight 13 kg
		<b>F/UTP - 4 pairs</b>
305 <sup>1</sup>	0 328 56	Length 305 m Supplied in reel in box. Weight 15 kg
500 <sup>1</sup>	0 327 56	Length 500 m Supplied on reel. Weight 27 kg
		<b>F/UTP - 4 pairs</b>
305 <sup>1</sup>	0 328 57	Length 305 m Supplied in cardboard. Weight 17 kg
500 <sup>1</sup>	0 327 58	Length 500 m Supplied on reel. Weight 25 kg
		<b>F/UTP - 2 x 4 pairs</b>
500 <sup>1</sup>	0 327 76	Length 500 m Supplied on reel. Weight 51 kg
		<b>SF/UTP - 4 pairs</b>
500 <sup>1</sup>	0 327 57	Length 500 m Supplied on reel. Weight 33 kg
500 <sup>1</sup>	0 327 59	Length 500 m Supplied on reel. Weight 30 kg

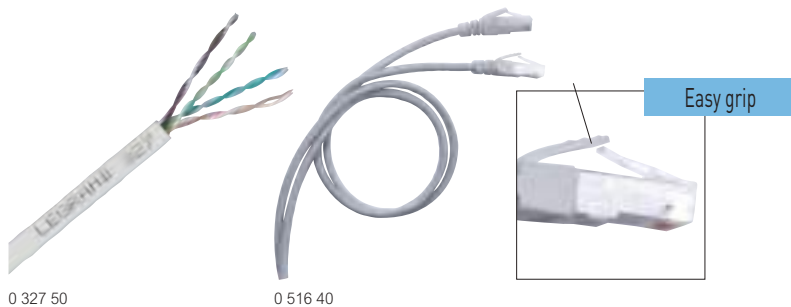
1: in metre(s)

Pack	Cat.Nos	RJ 45 patch cords and user cords Cat. 6
		PVC
		RJ 45/RJ 45 - right
		<b>U/UTP, unshielded impedance 100 Ω</b>
1	0 518 18	Length 0.5 m
1	0 517 72	Length 1 m
1	0 517 73	Length 2 m
1	0 517 74	Length 3 m
1	0 517 75	Length 5 m
1	0 515 11	Length 15 m
1	0 515 12	Length 20 m
		LSZH
		<b>F/UTP screened, impedance 100 Ω</b>
1	0 518 62	Length 1 m
1	0 518 63	Length 2 m
1	0 518 64	Length 3 m
1	0 518 65	Length 5 m
		PVC
		<b>F/UTP screened, impedance 100 Ω</b>
1	0 518 15	Length 0.5 m
1	0 517 62	Length 1 m
1	0 517 63	Length 2 m
1	0 517 64	Length 3 m
1	0 517 65	Length 5 m
		LSZH
		<b>SF/UTP shielded, impedance 100 Ω</b>
5	0 518 54	Length 1 m
5	0 518 55	Length 2 m
5	0 518 56	Length 3 m
5	0 518 57	Length 5 m
		PVC
		<b>SF/UTP shielded, impedance 100 Ω</b>
1	0 517 52	Length 1 m
1	0 517 53	Length 2 m
1	0 517 54	Length 3 m
1	0 517 55	Length 5 m

Pack	Cat.Nos	High Density (AWG 28) RJ45 patch cords and user cords Cat. 6
		RJ 45/RJ 45 - right
		<b>U/UTP</b>
1	0 515 45	Length 0.5 m
1	0 515 46	Length 1 m
1	0 515 47	Length 2 m
1	0 515 48	Length 3 m
1	0 515 49	Length 5 m

# Legrand cabling system, LCS<sup>3</sup> cat. 5e

cables and cords



0 327 50

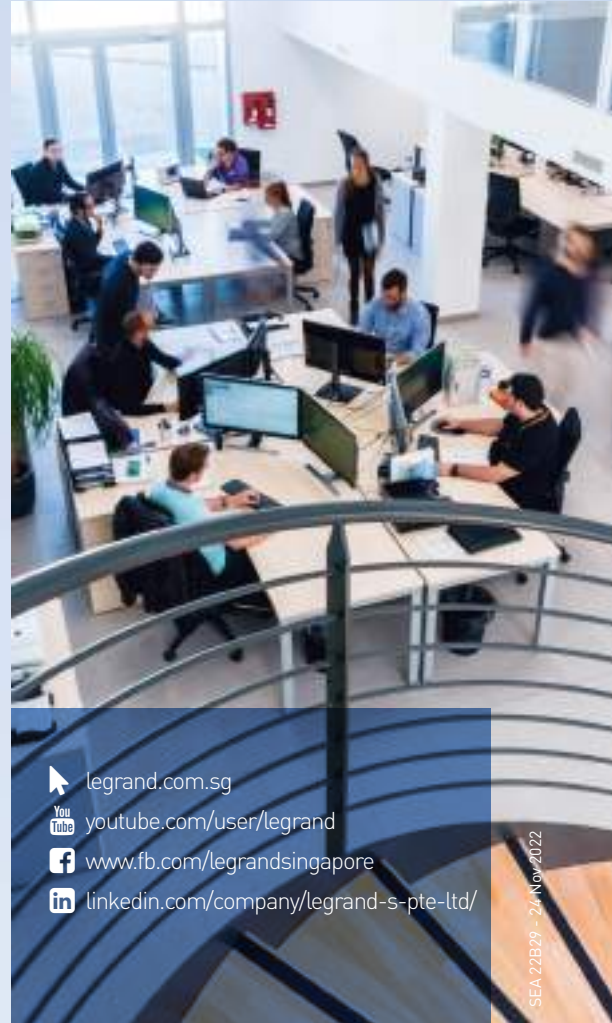
0 516 40

Pack	Cat.Nos	Cat. 5e cables for local networks
		4 twisted pairs, 100 Ω LSZH sheath: zero halogen Grey RAL 7035 colour code TIA/EIA
		<b>U/UTP - 4 pairs</b>
305 <sup>1</sup>	LSZH 0 327 50	Length 305 m Supplied in cardboard box. Weight 9 kg
500 <sup>1</sup>	0 328 53	Length 500 m Supplied on reel. Weight 30 kg
305 <sup>1</sup>	PVC 0 327 51	Length 305 m Supplied in cardboard box. Weight 9 kg
305 <sup>1</sup>	0 327 52	<b>F/UTP - 4 pairs</b> Length 305 m Supplied in cardboard box. Weight 11.6 kg
500 <sup>1</sup>	0 328 50	Length 500 m Supplied on reel. Weight 26 kg
305 <sup>1</sup>	0 327 53	Length 305 m Supplied in cardboard box. Weight 11 kg

1: in metre(s)

Pack	Cat.Nos	Cat. 5e RJ 45 patch cords and user cords
		RJ 45/RJ 45 - straight Compliant with ISO/IEC 11 801, EN 50173, ANSI/TIA 568 standards Grey RAL 7035
		<b>Unscreened U/UTP, impedance 100 Ω</b>
1	PVC 0 518 17	Length 0.5 m
1	0 516 36	Length 1 m
1	0 516 37	Length 2 m
1	0 516 38	Length 3 m
1	0 516 39	Length 5 m
		<b>Screened F/UTP, impedance 100 Ω</b>
1	0 518 14	Length 0.5 m
1	0 516 40	Length 1 m
1	0 516 41	Length 2 m
1	0 516 42	Length 3 m
1	0 516 43	Length 5 m





-  [legrand.com.sg](http://legrand.com.sg)
-  [youtube.com/user/legrand](https://youtube.com/user/legrand)
-  [www.fb.com/legrandsingapore](https://www.fb.com/legrandsingapore)
-  [linkedin.com/company/legrand-s-pte-ltd/](https://linkedin.com/company/legrand-s-pte-ltd/)

SEA 22B29 - 24 Nov 2022



**Singapore**  
17 Neythal Road,  
Singapore 628582  
Tel: + 65 6416 1550  
Fax: + 65 6416 1580