

PVC-LINK[®]

POWERED FOR
EXCELLENCE

HEAVY DUTY



CATALOGUE
PAGES
INSIDE

THE GLOBAL SPECIALIST
IN ELECTRICAL AND DIGITAL BUILDING INFRASTRUCTURES

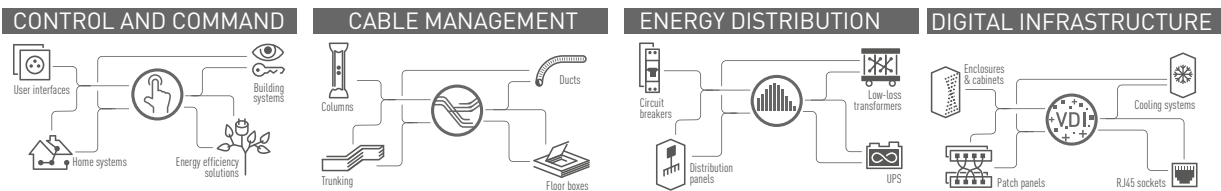
 **MEGAPOWER** |  **legrand[®]**

THE LEGRAND GROUP

A GLOBAL PLAYER

Legrand is the global specialist in electrical and digital building infrastructures. The group offers a comprehensive range of solution and services tailored to residential, commercial and industrial applications. The scope of its offering and its leading positions make Legrand a worldwide benchmark.

4 KEY AREAS OF EXPERTISE



TURNOVER
NEARLY
€6.6 BILLION
IN TOTAL SALES IN
2019

MORE THAN
36,000 EMPLOYEES

INNOVATION
**4.8% OF 2018
SALES
INVESTED
IN R&D**

A WIDE CHOICE
OF SOLUTIONS

OVER
**230,000
CATALOGUE
ITEMS**

**80 PRODUCT
FAMILIES**

SALES IN MORE THAN
80 COUNTRIES



WHO WE ARE

TRUSTED BRAND OVER
30 YEARS

ISO CERTIFIED
ISO 9001:2015

Quality Management System

ISO 14001:2015

Environmental Management Systems

WORLD CLASS FACILITIES

ON EXTRUSION & INJECTION

including tooling, testing and latest production technology such as compounding, on-line and off-line finishing, down-stream engineering and packaging

BUILD-UP AREA OF

85,000 SQFT

ON A 120,000 SQFT LANA

INTERNATIONAL PRESENCE OVER

13 COUNTRIES

LEGRAND MALAYSIA



MEGAPOWER LEGRAND

Megapower was established in 1990 to serve and provide quality PVC cable management system and wiring accessories. We started production of a variety of high quality unplasticised polyvinyl (uPVC) products in its state-of-the-art factory, located in Selangor, 25KM away from Kuala Lumpur, Malaysia.

In 2011, a joint venture between Megapower and Legrand was formed marking a new association between two well-known brands in the industry. The association of two companies provided a stronger base expertise of one-stop solutions to serve the construction and electrical utilities.

HD

Heavy Duty
442112

1

Mechanical Protection for durability against compression and Impact forces compliances to IEC 61386-21

CONDUIT TESTED

for Excellence



COMPRESSION TEST

Endurability of compressive load over 1250N.

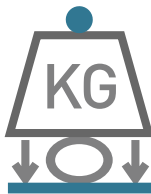


2

3

IMPACT TEST

Resilience to impact forces over 2kg mass of hammer with fall height of 300mm



4

NON-FLAME PROPAGATION

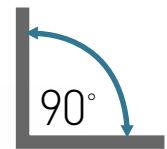
flame extinguished immediately after the source of the flame is removed.



5

ABLE TO FORM 90 DEGREE

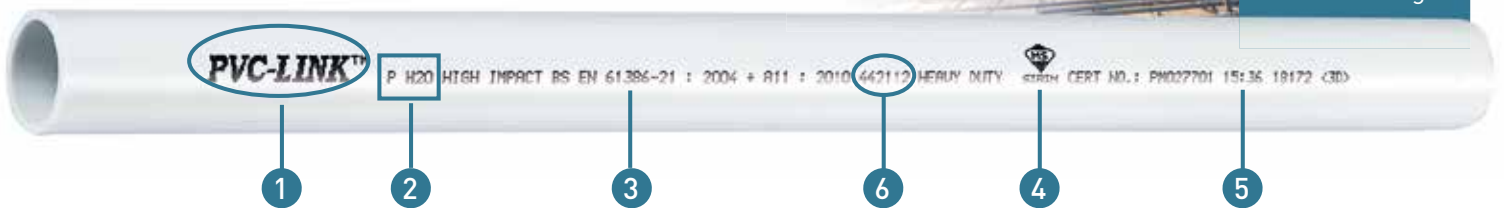
with the aid of bending spring



HIGH INTERNATIONAL QUALITY STANDARD

PVC-LINK is independently tested to meet the intended design and wiring application as stipulated by international standard IEC 61386 - 21

Delivers Heavy Duty performance with time saving & lower installation costs for high rise building



- 1 Manufacturer and/or Brand name identification
- 2 Product Code
- 3 Compliance with International Standard IEC 61386-21
- 4 Sirim marking & certification number
- 5 Exact date and time of manufacture for easy tracking

- 6 4- Compression rating (Rating 4 = Heavy Duty)
- 4- Impact rating (Rating 4 = Heavy Duty)
- 2- Min. Serving Temperature (Rating 2=-5 °C)
- 1- Max. Serving Temperature (Rating 1= +60 °C)
- 1- Bending resistance (Rating 1 = Rigid)
- 2- Electrical Characteristic (Rating 2= With electrical insulating characteristics)



ONE BRAND FOR ALL SOLUTIONS

Over 10 product ranges (conduits, fittings, trunking, MCB boxes etc) for over thousand products. Your ultimate & ideal partner for all electrical solution where purchases & logistic are easily integrated.



ALWAYS MEET YOUR EXPECTATIONS

Stringent quality control and testing are employed for the International Electrotechnical Commission (IEC) 61386-21 Standard certification, which is the International Standard used for Conduit Systems for Cable Management. The manufacturing facility has also been awarded with ISO 9001:2015 Quality Management and ISO 14001:2015 Environmental Management Systems certifications.



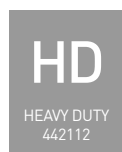
PROVEN RELIABILITY FOR 30 YEARS OF SUCCESSFUL PROJECTS

The most recognized uPVC conduit solution provider in Malaysia that constantly strives for the best quality and services with many reputable successful project references.

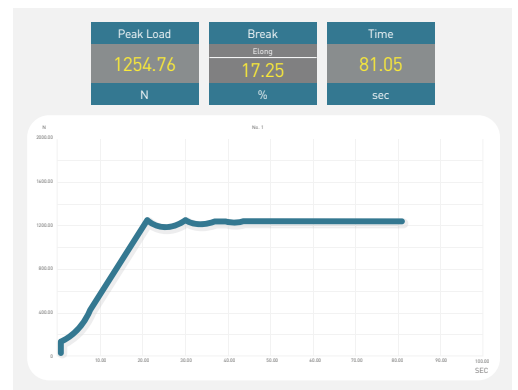


SAVE TIME ON INSTALLATION

Our product are tested under heavier conditions than the normative for an over performing quality that always guarantees time saving for you.



Impact Test



Compression Test

HIGH IMPACT HEAVY DUTY uPVC CONDUIT AND FITTINGS



High Impact Heavy Duty uPVC Conduit



QTY/ PACK	CAT. NOS	SIZE (mm)	LENGTH (m)	COLOR
50	EP H20	20	2.9	W/O
50	EP H25	25	2.9	W/O
25	EP H32	32	2.9	W/O
20	EP H40	40	2.9	W
15	EP H50	50	2.9	W

Terminal One Way Box



QTY/ PACK	CAT. NOS	SIZE (mm)	DIAMETER (mm)	COLOR
100	IPCB 20-1	20	65	W/O/B
100	IPCB 25-1	25	65	W/O/B
100	IPCB 32-1	32	75	W/O/B

Intersection Four Way Box (Ø 65 mm)



QTY/ PACK	CAT. NOS	SIZE (mm)	COLOR
100	IPCB 20-4	20	W/O/B
100	IPCB 25-4	25	W/O/B
100	IPCB 32-4	32	W/O/B

Through Two Way Box



QTY/ PACK	CAT. NOS	SIZE (mm)	DIAMETER (mm)	COLOR
100	IPCB 20-2	20	65	W/O/B
100	IPCB 25-2	25	65	W/O/B
100	IPCB 32-2	32	75	W/O/B

U, Y, H Way Box (Ø 65 mm)



QTY/ PACK	CAT. NOS	SIZE (mm)	COLOR
100	IPCB 20-H	20	W/B
100	IPCB 20-U	20	W/B
100	IPCB 20-Y	20	W/B

Angle Two Way Box



QTY/ PACK	CAT. NOS	SIZE (mm)	DIAMETER (mm)	COLOR
100	IPCB 20-2A	20	65	W/O/B
100	IPCB 25-2A	25	65	W/O/B
100	IPCB 32-2A	32	75	W/O/B

Lid Cover (Screw Type) (Ø 65 mm)



QTY/ PACK	CAT. NOS	SIZE (mm)	COLOR
100	IPLC	20&25	W/O/B

Tee Three Way Box



QTY/ PACK	CAT. NOS	SIZE (mm)	DIAMETER (mm)	COLOR
100	IPCB 20-3	20	65	W/O/B
100	IPCB 25-3	25	65	W/O/B
100	IPCB 32-3	32	75	W/O/B

Protector Cover (Clip Type)



QTY/ PACK	CAT. NOS	SIZE (mm)	DIAMETER (mm)	COLOR
100	IPPC	20&25	65	W/O/B
100	IPPC 32	32	75	B/W



Color = W-White, B-Black, O-Orange

FITTINGS

Bending Spring



QTY/ PACK	CAT. NOS	SIZE (mm)	TYPE
30	OPS 20	20	round
30	OPS 25	25	round
10	OPS 32	32	round
25	* OUS 20	20	square
25	* OUS 25	25	square
10	* OUS 32	32	square

* Heavy Duty

Inspection Tee



QTY/ PACK	CAT. NOS	SIZE (mm)	COLOR
100	IPIT 20	20	W/O/B
100	IPIT 25	25	W/O/B

Coupling



QTY/ PACK	CAT. NOS.	SIZE (mm)	COLOR
100	IPC 20	20	W/O/B
100	IPC 25	25	W/O/B
100	IPC 32	32	W/O/B
100	IPC 40	40	W/O
100	IPC 50	50	W/B

Inspection Bend



QTY/ PACK	CAT. NOS	SIZE (mm)	COLOR
100	IPIB 20	20	W/O/B
100	IPIB 25	25	W/O/B

Female Adaptor



QTY/ PACK	CAT. NOS	SIZE (mm)	COLOR
100	IPFA 20	20	W/O/B
100	IPFA 25	25	W/O/B
100	IPFA 32	32	W/B

Inspection Elbow



QTY/ PACK	CAT. NOS	SIZE (mm)	COLOR
100	IPIE 20	20	W/O/B
100	IPIE 25	25	W/O/B

Reducer



QTY/ PACK	CAT. NOS	SIZE (mm)	COLOR
100	IPR 20	25-20	W/O/B
100	IPR 32	32-25	W

Solid Bend



QTY/ PACK	CAT. NOS	SIZE (mm)	COLOR
100	*EPSB 32	32	W
100	EPSB 40	40	W
100	EPSB 50	50	W

*MTO - Made to Order: Special on demand with MOQ.

Bar Saddle



QTY/ PACK	CAT. NOS	SIZE (mm)	COLOR
100	IPBS 20	20	W/O/B
100	IPBS 20+S	20	W
100	IPBS 25	25	W/O/B
100	IPBS 25+S	25	W
100	OPBS 32	32	W
100	OPBS 40	40	W

* +s = included with screw

Spring Clip Saddle



QTY/ PACK	CAT. NOS	SIZE (mm)	COLOR
100	IPSCS 20	20	W/O/B
100	IPSCS 25	25	W/O
100	IPSCS 32	32	W/O

Color = W-White, B-Black, O-Orange

FITTINGS

Extension Ring (Ø 65 mm)



QTY/ PACK	CAT. NOS	HEIGHT (mm)	COLOR
100	IPER-L	25	W/B
100	IPER-H	38	W/O/B
100	IPER-H50	50	W/B

Partition Box



QTY/ PACK	CAT. NOS	SIZE (INCH)	TYPE	COLOR
100	IPPB-1	3"x3"	1 Gang	W
50	IPPB-2	3"x6"	2 Gang	W
50	IPPB-3	3"x7"	2x1Gang	W

Loop in Box (Ø 65 mm)



QTY/ PACK	CAT. NOS	SIZE (mm)	COLOR
600	IPCLIB	20	W

Angle Floor Box



QTY/ PACK	CAT. NOS	SIZE (INCH)	TYPE	COLOR
100	*IPAFB-1	3"x3"	1 Gang	W
50	*IPAFB-2	3"x6"	2 Gang	W
50	*IPAFB-3	3"x7"	2x1 Gang	W

* Unbreakable Polycarbonate Version available upon request

Dome Cover



PDC



PDC-C

QTY/ PACK	CAT. NOS	SIZE (mm)	DIAMETER (mm)	COLOR
100	IPDC 20	20	65	W/O/B
100	IPDC 25	25	65	W/B
100	IPDC-C 20	20	65	W/O/B
100	IPDC-C 25	25	65	W/O

Blank Plate



QTY/ PACK	CAT. NOS	SIZE (INCH)	TYPE	COLOR
100	*IPBP-1-HD	3"x3"	1 Gang	W
100	IPBP-1	3"x3"	1 Gang	W
100	IPBP-2	3"x6"	2 Gang	W

* HD = Heavy Duty

Surface Mounting Box



QTY/ PACK	CAT. NOS	SIZE (INCH)	TYPE	COLOR
100	IPSMB-1	3"x7"	1 Gang	W
50	IPSMB-2	3"x6"	2 Gang	W
50	IPSMB-3	3"x7"	2x1Gang	W
40	IPSMB-4	3"x10"	3x1Gang	W
30	IPSMB-5	3"x13"	4x1Gang	W

Concealed Box Cover



QTY/ PACK	CAT. NOS	SIZE (INCH)	TYPE	COLOR
100	IPK0BC-1	3"x3"	1 Gang	W
100	IPK0BC-2	3"x6"	2 Gang	W

Concealed Box



QTY/ PACK	CAT. NOS	SIZE (INCH)	TYPE	COLOR
100	IPKOB-1	3"x3"	1 Gang	W/B
50	IPKOB-2	3"x6"	2 Gang	W/B
50	IPKOB-3	3"x7"	2x1Gang	W

Connectable Concealed Box



QTY/ PACK	CAT. NOS	SIZE (INCH)	TYPE	COLOR
100	IPKOB-1C	3"x3"	1Gang	W
100	IPKOB-1C-H (50 mm)	3"x3"	1Gang	W

Color = W-White, B-Black, O-Orange



FITTINGS

Adjustable Concealed Box



QTY/ PACK	CAT. NOS	SIZE (INCH)	TYPE	COLOR
100	IPKOB-1A	3"x3"	1 Gang	W
50	IPKOB-3A	3"x7"	2x1 Gang	W

Vertical Concealed Box



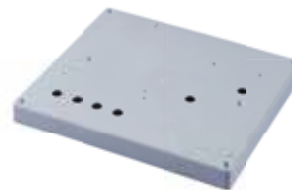
QTY/ PACK	CAT. NOS	SIZE (INCH)	TYPE	COLOR
100	IPKOB-1V	3"x3"	1 Gang	W

Fan Regulator Board



QTY/ PACK	CAT. NOS	WXH (mm)	COLOR
50	IPFRB 410	97 x 225	W

Meter Block



QTY/ PACK	CAT. NOS	WxH (mm)	COLOR
25	IPMB 910	250 x 225	W

Weatherproof Protective Cover



Heavy Duty

QTY/ PACK	CAT. NOS	TYPE	COLOR
100	IPWPC	1 Gang	S/T/W
100	*IPWPC-1-HD	1 Gang	S/T/W
100	OPWPC-2	2 Gang	W

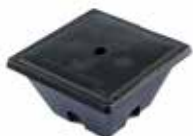
* HD= Heavy duty

Earth Tape Clip



QTY/ PACK	CAT. NOS	SIZE (mm)	COLOR
100	IPETC	25x3	BR

Earth Chamber



QTY/ PACK	CAT. NOS	LxWxH (mm)	COLOR
50	IPEC	175x175x90	B

Heavy Duty Earth Chamber



QTY/ PACK	CAT. NOS	LxWxH (mm)	COLOR
1	IPEC-HD	245 x 245 x 210	B

*HD= Heavy Duty

Color = W-White, B-Black, S-Smokey, T-Transparent

ELECTRICAL ACCESSORIES

MCB Box



QTY/ PACK	CAT. NOS	WAY	LxWxH (mm)	COLOR
40	IPL 06-10	10	222x146x98	S/T
30	IPL 08-12	12	256x176x98	S/T
25	IPL 12-16	16	327x176x98	S/T
25	IPL 15-19	19	381x176x98	S/T
20	IPL 19-23	23	454x176x98	S/T
12	IPL 28	28	290x370x120	S/T/W
10	IPL 42	42	290x495x120	S/T/W
10	OPL 45	45	455x315x110	W
10	OPL 48	48	290x495x120	W

ELCB/ MCB Box



QTY/ PACK	CAT. NOS	WAY	LxWxH (mm)	COLOR
130	IPL 2	2 WAY	150 x 48 x 70	W
72	IPL 4	4 WAY	150 x 84 x 70	W

MCB Spacer



QTY/ PACK	CAT. NOS	WAY	LxWxH (mm)	COLOR
1000	IPMS	12WAY	215x53	W

* made to order for non-flame propagation



- High Impact Resistance HIPS material
- Top to bottom lid cover
- High Grade Copper Terminal
- Fast Clip between cover to circuit breaker din rail
- Numerical identification for easy installation



Discover more of
Practibox S new plastic cabinets
& RX3 Essential Protection

Color = W-White, S-Smokey, T-Transparent



ELECTRICAL ACCESSORIES

13A Main Tester



QTY/ PACK	CAT. NOS	ELCB TESTER	COLOR
12	OPMT 13E	150mA	BL
12	OPMT 13E-300	300mA	BL

Wire Puller



QTY/ PACK	CAT. NOS	LENGTH (m)	DIAMETER (mm)	COLOR
30	EPWP 4515	15	4.5	W
20	EPWP 4530	30	4.5	W
10	EPWP 4550	50	4.5	W
5	EPWP 45100	100	4.5	W

Line Tap

(with feet)



QTY/ PACK	CAT. NOS	CABLE SIZE (mm) ²	COLOR
8	OPLT 16	16	W
8	OPLT 25	25	W
8	OPLT 35	35	W
8	OPLT 50	50	W
8	OPLT 70	70	W

Twisted HD Wire Puller



QTY/ PACK	CAT. NOS	LENGTH (m)	DIAMETER (mm)	COLOR
10	OPHWP 15	15	5.5x2	B
5	OPHWP 30	30	5.5x2	B

Wall Plug



QTY/ PACK	CAT. NOS	SIZE (mm)	COLOR
25	IPWP 6	6	B/BL/Y

Color = W-White, O-Orange, B-Black, BL- Blue, Y- Yellow

Telecommunication Wire Puller



Rolling Frame

QTY/ PACK	CAT. NOS	LENGTH (m)	DIAMETER (mm)	COLOR
1	OPTWP-120-F	120	11	O
1	OPTWP-150-F	150	11	O
1	OPTWP-225-F	225	11	O
1	OPTWP-260/14-F	260	14	O
1	OPTWP-305/14-F	305	14	O

CORRUGATED CONDUIT AND FITTINGS



Corrugated Conduits



QTY/ PACK	CAT. NOS	SIZE (mm)	LENGTH (m)	COLOR
3	OPCC 7	7	300	B
3	* OPCC 7 BC	7	300	B
3	OPCC 10	10	200	B
3	* OPCC 10 BC	10	200	B
7	EPCC 16	16	50	B/W
7	* EPCC 16 BC	16	50	B
3	EPCC 32	32	25	B/W
3	EPCC 40	40	25	B/W
3	EPCC 50	50	25	B/W
1	OPCC 65	65	200	B

*BC - Cut Type

Corrugated Conduits (Non flame propagation)



QTY/ PACK	CAT. NOS	SIZE (mm)	LENGTH (m)	COLOR
7	EPCC 20	20	50	W/O/B
7	EPCC 25	25	50	W/O/B

* Fittings are supply seperately.

Corrugated Conduit Adaptor (Clip Type)



QTY/ PACK	CAT. NOS	SIZE (mm)	COLOR
100	IPCCA-C 20	20	W/O/B
100	IPCCA-C 25	25	W/O/B

Corrugated Conduit Adaptor (Screw Type)



QTY/ PACK	CAT. NOS	SIZE (mm)	COLOR
100	OPCCA 16	16	B
100	IPCCA 20	20	W/O/B
100	IPCCA 25	25	W/O/B
10	OPCCA 32	32	B
10	OPCCA 40	40	B
10	OPCCA 50	50	B

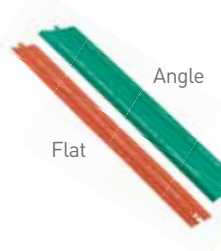


- Wiring
Protection
- Easy
Maintenance
- Safe
Installation
- Cost
Saving
- Fast
Installations

Color = W-White, O-Orange, B-Black

TELEPHONE TRUNKING, CABLE SLAP, ACCESSORIES

Cable Slab - Flat/Angle



QTY/ PACK	CAT. NOS	SIZE (mm)	LENGTH (m)	COLOR
100	EPCS 120F	120	1	GN/O/Y
50	EPCS 150F	150	1	GN/O/Y
50	EPCS 200F	200	1	GN/O/Y


Embossed word:
Centra: DANGER! ELECTRIC CABLE BELOW

50	EPCS250A	250	1	GN/O/Y
----	----------	-----	---	--------

Embossed word:
Top : BAHAYA! KABEL LETRIK DI BAWAH
Bottom : DANGER! ELECTRIC CABLE BELOW

Color = Orange (HV), Green (LV/ Telecom), Yellow (Gas)

Rectangular Telephone Trunking



QTY/ PACK	CAT. NOS	DUTY	LENGTH (m)	WxH (mm)	COLOR
10	EPPT 12	MD	3.65	50x25	G
10	EPPT 13	MD	3.65	75x25	G
10	EPPT 14	MD	3.65	100x25	G

MD: Medium duty

Hazard Tape



QTY/ PACK	CAT. NOS	WIDTH (mm)	LENGTH (m)	COLOR
1	OPHT3Y-E	75	610	Y
1	OPHT6Y-E	150	305	Y
1	OPHT60-T	150	305	O


* Other colours and wording available upon request.

* Printing -E: BAHAYA! KABEL LETRIK DIBAWAH
DANGER! ELECTRIC CABLE BELOW

* Printing -T: AWAS! KABEL TELEKOM DI BAWAH
HUBUNGI TELEKOM: TEL 100

Color = Orange (HV), Green (LV/ Telecom), Yellow (Gas)

Rectangular Telephone Trunking



QTY/ PACK	CAT. NOS.	DUTY	LENGTH (m)	WxH (mm)	THICKNESS (mm)	COLOR
10	EPUFD 223	HD	2.9	50x25	2.3	W
10	EPUFD 325	HD	2.9	75x25	2.5	W
10	EPUFD 427	HD	2.9	100x25	2.7	W

HD: Heavy duty


TNB Casing



QTY/ PACK	CAT. NOS	LENGTH (m)	WxH (mm)	COLOR
80	EPTC2W-32	1.83	36X13	W
60	*EPTC3W-40	1.83	45X13	W
60	EPTC4W-50	1.83	55X13	W

*MTO - Made to Order: Special on demand with MOQ.

Rectangular Telephone Trunking - 38mm Height



QTY/ PACK	CAT. NOS	DUTY	LENGTH (m)	WxH (mm)	THICKNESS (mm)	COLOR
10	EPUFD 232	HD	2.9	50x38	3.2	W
10	EPUFD 332	HD	2.9	75x38	3.2	W
10	EPUFD 432	HD	2.9	100x38	3.2	W

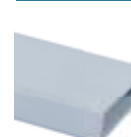
HD: Heavy duty

TNB Clip & Junction Box



QTY/ PACK	CAT. NOS	WxH (mm)	COLOR
100	IPTCC 32	15X32	W
100	IPTCC 40	15X45	W
100	IPTCC 50	15X55	W
100	IPTCJB	68X107	W

Trapezoidal Telephone Trunking



QTY/ PACK	CAT. NOS	DUTY	LENGTH (m)	WXH (mm)	THICKNESS (mm)	COLOR
10	EPUFDT 225	VHD	2.9	50x25	2.5	W
10	EPUFDT 332	VHD	2.9	75x25	3.2	W
10	EPUFDT 432	VHD	2.9	100x25	3.2	W

VHD: Very heavy duty

Color = W-White, GN- Green, G-Grey, Y- Yellow, O-Orange

WEATHERPROOF ENCLOSURE BOX IP66, JUNCTION BOX IP44 & CABLE GLAND IP68

Weatherproof Enclosure Box IP66 & Junction Box IP44



Weatherproof Cable Pg Gland IP68



QTY/ PACK	CAT. NOS	LxWxH (mm)	COLOR
150	IPEB 442	110 x110x60	G/T
90	IPEB 444	110x110x110	G/T
72	IPEB 643	155x115x80	G/T
50	IPEB 644	155x115x110	G/T
42	IPEB 863	215x150x80	G/T
30	IPEB 864	215x150x110	G/T
36	IPEB 883	215x215x80	G/T
28	IPEB 884	215x215x110	G/T
20	IPEB 1084	250x200x110	G/T
14	IPEB 1086	250x200x160	G/T
12	IPEB 1296	310x230x145	G/T
9	IPEB 15127	390x310x180	G/T
4	OPEB 18155	465x385x140	G
120	* IPJB 331	80x80x40	G

QTY/ PACK	CAT NOS	CABLE DIAMETER (mm)	MOUTING HOLE (mm)	COLOR
100	OPPG-7	3-6	13	G
100	OPPG-9	4-8	16	G
100	OPPG-11	5-10	19	G
100	OPPG-13.5	7-12	20	G
50	OPPG-16	10-14	23	G
50	OPPG-21	13-18	29	G
50	OPPG-29	18-25	37	G
10	OPPG-36	22-32	48	G
10	OPPG-42	30-38	54	G
10	OPPG-48	34-44	60	G
10	OPPG-63	42-50	73	G

- ABS thermoplastic
- IP66 Dust/weatherproof
- High impact strength
- Temperature range from -5°C - +70°C
- Chemical resistance to aqueous acids, alkalis, seawater, concentrated phosphoric & hydrochloric acid
- Polycarbonate version available upon request

*Other color available upon MTO request

* IPJB 331 - Junction Box IP44

Index of protection Degrees of protection provided by enclosures for electrical equipment (IP code)

According to standards: IEC 60529, BS EN 60529 and NF EN 60529

1 st digit: protection against solid foreign objects			2 nd digit: protection against ingress of water			Additional letter: protection against access to hazardous parts		
IP	tests	protection	IP	tests	protection	IP	tests	protection
0		No protection	0		No protection			
1		Protected against solid bodies larger than 50 mm	1		Protected against vertically-falling drops of water (condensation)	A		The back of the hand remains remote from dangerous parts
			2		Protected against drops of water falling at up to 15° from the vertical			
2		Protected against solid bodies larger than 12.5 mm	3		Protected against drops of rain water at up to 60° from the vertical	B		The dangerous parts can not be touched when introducing a finger
			4		Protected against projections of water from all directions			
3		Protected against solid bodies larger than 2.5 mm	5		Protected against jets of water from all directions	C		The dangerous parts can not be touched when introducing a tool (eg a screwdriver)
			6		Protected against jets of water of similar force to heavy seas			
4		Protected against solid bodies larger than 1 mm	7		Protected against the effect of immersion			
5		Protected against dust (no harmful deposit)	8		Protected against prolonged effects of immersion under pressure		D	
6		Completely protected against dust	9 9K ⁽¹⁾		Protected against high pressure and temperature water jets			

(1) In accordance to ISO 20653

MINI, MODULAR & ROUND TRUNKING

Mini Trunking



QTY/ PACK	CAT. NOS	WxH (mm)	LENGTH (m)	COLOR
160	EPMT 1020	20x10	1.83	W
120	EPMT 1327	27x13	1.83	W
120	EPMT 1330	30x13	1.83	W
80	EPMT 1640	40x16	1.83	W
80	EPMT 2040	40x20	1.83	W
80	EPMT 1650	50x16	1.83	W

Modular Trunking



QTY/ PACK	CAT. NOS	WxH (mm)	LENGTH (m)	COLOR
40	EPMT 3250	50x32	1.83	W
25	EPMT 5550	50x55	1.83	W
20	EPMT 5575	75x55	1.83	W
15	EPMT 55100	100x55	1.83	W
12	EPMT 75100	100x75	1.83	W
2	EPMT 100100-2M	100x100	2.00	W
2	EPMT 100150-2M	100x150	2.00	W
2	OPMT 55200-2M	200x55	2.00	W
2	OPMT 100200-2M	200x100	2.00	W

2 Compartment Trunking



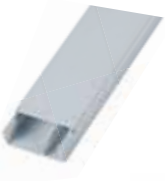
QTY/ PACK	CAT. NOS	WxH (mm)	LENGTH (m)	COLOR
10	OPMT2C 2040-2M	40x20	2.00	W
10	OPMT2C 2060-2M	60x20	2.00	W
10	OPMT2C 3280-2M	80x32	2.00	W

Round Duct



QTY/ PACK	CAT. NOS	WxH (mm)	LENGTH (m)	COLOR
75	EPRD 30	30x8	2.00	G
50	EPRD 50	50x13	2.00	G
25	EPRD 70	70x15	2.00	G
24	EPRD 90	90x22	2.00	G
12	EPRD 120	120x30	2.00	G

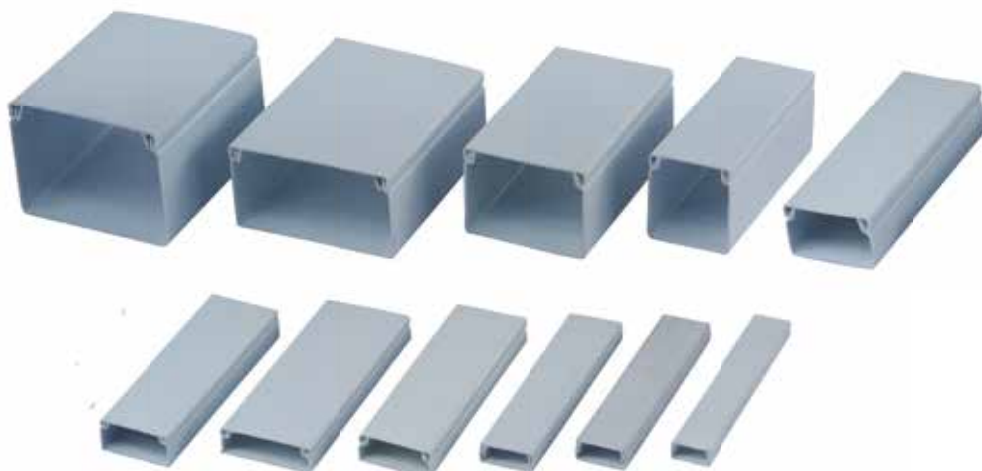
3 Compartment Trunking



QTY/ PACK	CAT. NOS	WxH (mm)	LENGTH (m)	COLOR
10	OPMT3C 40100-2M	100x40	2.00	W

PVC-LINK®

High Impact uPVC Round Duct is constructed from specially formulated high impact polyvinyl chloride. The distinctive design feature provides safe and secure cable management at all time.

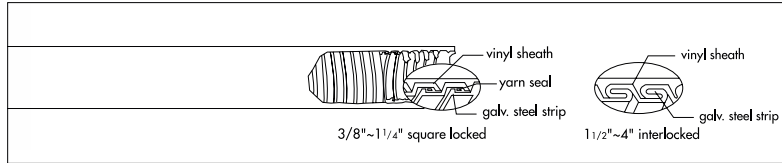


*Other color available upon MTO request
Color: W- White, G-Grey



HEAVY GAUGE WATERTIGHT FLEXIBLE CONDUIT & ADAPTOR (EF TYPE)

Watertight Flexible Conduit (EF Type)



QTY/ PACK	CAT. NOS	SIZE (INCH)	VINYL SHEATH THICKNESS (mm)	MIN. BENDING RADIUS (mm)	COIL (m)
1	OPBA 206703	3/8	1.0	60	50
1	OPBA 206704	1/2	1.0	80	50
1	OPBA 206704T	1/2	1.0	80	50
1	OPBA 206706	3/4	1.0	100	30
1	OPBA 206706T	3/4	1.0	100	30
1	OPBA 206710	1	1.0	150	30
1	OPBA 206712	1 1/4	1.5	180	20
1	OPBA 206714	1 1/2	1.5	220	20
1	OPBA 206720	2	1.5	250	15
1	OPBA 206724	2 1/2	2.0	300	10
1	OPBA 206730	3	2.0	450	10
1	OPBA 206740	4	2.0	600	5

- Galvanized steel core, with flame retardent PVC coated.
- High flexibility, absolutely moisture-proof.
- Absorbs motion, vibration and bending indenfinitely.
- Cord packing size form 3/8" through 1-1/4" by squarelocked. 1-1/2" through 4" by interlocked.
- Temperature range from - 10 °C ~ +70 °C.
- IP66 Dust / weatherproof

*T= Sirim tested

Watertight Straight Adaptor



QTY/ PACK	CAT. NOS	SIZE (INCH)	THREAD
100	OPBB 210103	3/8	MM/NPT
100	OPBB 210104	1/2	MM/NPT
100	OPBB 210106	3/4	MM/NPT
100	OPBB 210110	1	MM/NPT
100	OPBB 210112	1 1/4	NPT
100	OPBB 210114	1 1/2	NPT
100	OPBB 210120	2	NPT
100	OPBB 210124	2 1/2	NPT
100	OPBB 210130	3	NPT
100	OPBB 210140	4	NPT

Watertight 90° Elbow Adaptor



QTY/ PACK	CAT. NOS	SIZE (INCH)	THREAD
100	OPBL 210103	3/8	NPT
100	OPBL 210104	1/2	NPT
100	OPBL 210106	3/4	NPT
100	OPBL 210110	1	NPT
100	OPBL 210112	1 1/4	NPT
100	OPBL 210114	1 1/2	NPT
100	OPBL 210120	2	NPT
100	*OPBL 210124	2 1/2	NPT
100	*OPBL 210130	3	NPT
100	*OPBL 210140	4	NPT

*MTO - Made to Order: Special on demand with MOQ.

Watertight Coupling



QTY/ PACK	CAT. NOS	SIZE (INCH)	THREAD
100	*OPBC 210103	3/8	PT
100	OPBC 210104	1/2	PT
100	OPBC 210106	3/4	PT
100	*OPBC 210110	1	PT
100	OPBC 210112	1 1/4	NPT
100	*OPBC 210114	1 1/2	NPT
100	*OPBC 210120	2	NPT

*MTO - Made to Order: Special on demand with MOQ.

MM – yellow, NPT- blue

WIRING ACCESSORIES

Wiring Duct



QTY/ PACK	CAT. NOS	WXH (mm)	LENGHT (m)	COLOUR
100	OPMD 0	25x25	1.7	G
225	OPMD 0.5	15x25	1.7	G
60	EPMD 1.5	33x45	1.7	G
40	EPMD 5	45x65	1.7	G
34	OPMD 6	72x64	1.7	G
100	OPMD 0L	25x25	2.0	G
225	EPMD 0.5L	15x25	2.0	G
80	OPMD 1L	25x45	2.0	G
80	OPMD 1.2L	33x33	2.0	G
60	OPMD 1.5L	33x45	2.0	G
44	OPMD 2L	45x45	2.0	G
56	OPMD 2.2L	50x50	2.0	G
36	OPMD 2.5L	65x45	2.0	G
44	OPMD 3L	33x65	2.0	G
60	OPMD 4L	25x65	2.0	G
40	EPMD 5L	45x65	2.0	G
40	OPMD 5.5L	60x60	2.0	G
36	OPMD 5.7L	65x65	2.0	G
34	OPMD 6L	72x64	2.0	G
42	OPMD 6.5L	33x100	2.0	G
30	OPMD 6.7L	50x100	2.0	G
24	OPMD 7L	70x100	2.0	G
24	OPMD 7.5L	100x75	2.0	G
18	OPMD 8L	100x100	2.0	G
16	OPMD 10L	150x75	2.0	G
12	OPMD 12L	150x100	2.0	G

Vinyl Wire End Cup



QTY/ PACK	CAT. NOS	CABLE (mm) ²	COLOR
100	OPEC 1.25	1.5	B/BL/GN/R/Y
100	OPEC 2	2.5	B/BL/GN/R/Y
100	OPEC 3.5	4	B/BL/GN/R/Y
100	OPEC 5.5	6	B/BL/GN/R/Y
100	OPEC 8	10	B/BL/GN/R/Y
100	OPEC 14	16	B/BL/GN/R/Y
100	OPEC 22	25 & 35	B/BL/GN/R/Y
100	OPEC 38	50	B/BL/GN/R/Y
100	OPEC 60	70	B/BL/GN/R/Y
50	OPEC 80	95	B/BL/GN/R/Y
50	OPEC 100	120	B/BL/GN/R/Y
50	OPEC 125	150	B/BL/GN/R/Y
50	OPEC 150	185	B/BL/GN/R/Y
50	OPEC 200	240	B/BL/GN/R/Y
50	OPEC 250	300	B/BL/GN/R/Y
25	OPEC 325	350	B/BL/GN/R/Y
25	OPEC 400	400	B/BL/GN/R/Y
25	OPEC 500	500	B/BL/GN/R/Y
25	OPEC 630	630	B/BL/GN/R/Y

WIRING ACCESSORIES

Nylon Cable Tie



QTY/ PACK	CAT. NOS	LENGTH INCH	LENGTH (mm)	WIDTH (mm)	MAX. BUNDLE DIA (m)	COLOUR
1000	OPCT 100/25	4	100	2.5	25	W/B
1000	OPCT 140/36	5 1/2	140	3.6	35	W/B
1000	OPCT 200/36	8	200	3.6	55	W/B
1000	OPCT 200/48	8	200	4.8	55	W/B
1000	OPCT 250/48	10	250	4.8	74	W/B
1000	OPCT 300/48	12	300	4.8	85	W/B
1000	OPCT 300/76	12	300	7.6	85	W/B
100	OPCT 370/48	14 1/2	370	4.8	102	W/B
100	OPCT 370/76	14 1/2	370	7.6	102	W/B
100	OPCT 430/48	17	430	4.8	125	W/B
100	OPCT 430/90	17	430	9.0	125	W/B
100	OPCT 530/90	21	530	9.0	150	W/B
100	OPCT 720/90	28	720	9.0	185	W/B
100	OPCT 790/90	31	790	9.0	220	W/B
100	OPCT 830/90	32	830	9.0	230	W/B
100	*OPCT 880/127	34 1/2	880	12.7	260	W/B
100	*OPCT 1030/127	40 1/2	1030	12.7	310	W/B

Cable Tie Mount



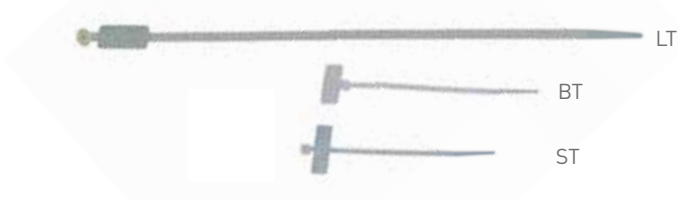
QTY/ PACK	CAT. NOS	W x L (mm)	COLOUR
500	OPCTM19	19 x 19	W/B
500	OPCTM28	28 x 28	W/B

Switch Board Lining



QTY/ PACK	CAT. NOS	TYPE	LENGTH (m)	COLOR
1	OPSL-122S153	Soft	153	B
1	*OPSL-122H183	Hard	183	B
1	OPSL-122S183	Soft	183	B
1	OPSL-125W153	Weatherproof	153	B

Nylon Cable Marker Tie



QTY/ PACK	CAT. NOS	LENGTH INCH	LENGTH (mm)	WIDTH (mm)	MAX. BUNDLE DIA (mm)
1000	OPCMT 100/25 ST	4	110	2.5	19
1000	OPCMT 110/25 BT	4 1/2	110	2.5	19
1000	OPCMT 200/25 ST	8	200	2.5	50
1000	OPCMT 200/48 LT	8	200	4.8	50
1000	OPCMT 210/25 BT	8 1/2	210	2.5	50
1000	OPCMT 300/48 LT	12	300	4.8	75

Spiral Band



QTY/ PACK	CAT. NO	WRAPPING RANGE (mm)	COLOUR
60	EPSB 06	10-50	W/B
60	EPSB 08	15-60	W/B
60	EPSB 10	20-60	W/B
60	EPSB 12	20-65	W/B
50	EPSB 15	20-70	W/B
30	EPSB 19	25-100	W/B
20	EPSB 24	30-130	W/B

Length : 10m

Copper Busbar Support



QTY/ PACK	CAT. NOS	SIZE (mm)
250	OPSM 25-M6	25 x M6
100	OPSM 35-M8	35 x M8
100	OPSM 45-M8	45 x M8
50	OPSM 50-M8	50 x M8
25	OPSM 76-M10	76 x M10

*MTO - Made to Order: Special on demand with MOQ.

Color = W-White, G-Grey, B-Black

WIRING ACCESSORIES

EC Type Cable Markers



COIL	CAT. NOS	MARKING	DIA-RANGE (mm)
1000	OPCMEC1	0-9 A-Z + - /	3.0 - 4.2

FM Type Cable Marker



COIL	CAT. NOS	MARKING	CABLE DIA-mm
500	OPCMFM	0-9 A - Z + - /	3.5 - 7.0

Hot Marker Tubing



QTY/ PACK	CAT. NOS	ROLL (m)	DIAMETER (mm)	COLOUR
1	OPHMT 2020	200	2.0	W
1	OPHMT 2520	200	2.5	W
1	OPHMT 3020	200	3.0	W
1	OPHMT 3220	200	3.2	W/Y
1	OPHMT 3520	200	3.5	W
1	OPHMT 3620	200	3.6	W
1	OPHMT 4020	200	4.0	W
1	OPHMT 4220	200	4.2	W
1	OPHMT 4520	200	4.5	W
1	OPHMT 5020	200	5.0	W
1	OPHMT 5520	200	5.5	W
1	OPHMT 6020	200	6.0	W
1	OPHMT 7010	100	7.0	W
1	OPHMT 8010	100	8.0	W
1	OPHMT 1010	100	10.0	W

* Made to order: Red, Yellow, Green, Blue

Fm Type Marker Strip



QTY/ PACK	CAT. NOS	DIGIT	DIAMETER WxL (mm)	COLOR
100	IPMS-65	9	9x65	B
100	IPMS-70	10	9x70	B
100	IPMS-100	16	9x100	B
100	IPMS-110	18	9x110	B
100	*IPMS-135	23	9x135	B

Hole Snap Bush & Hole Plug

PHP



*Hole Plug				
QTY/ PACK	CAT. NOS	MOUNTING HOLE (mm)	COLOUR	
100	OPHP-8	8	B	
100	OPHP-10	9.5	B	
100	OPHP-13	13.0	B	
100	OPHP-16	16.0	B	
100	OPHP-19	19.0	B	
100	OPHP-22	22.2	B	
100	OPHP-25	25.5	B	
100	OPHP-30	30.5	B	

PSB



*Hole Snap Bush				
QTY/ PACK	CAT. NOS	MOUNTING HOLE (mm)	COLOUR	
100	*OPSB-8	8	B	
100	OPSB-10	9.5	B	
100	OPSB-13	13.0	B	
100	OPSB-16	16.0	B	
100	OPSB-19	19.0	B	
100	OPSB-22	22.0	B	
100	OPSB-26	25.4	B	
100	OPSB-30	30.5	B	

Soft Hole Plug



QTY/ PACK	CAT. NOS	LxHxT (mm)	COLOR
100	IPHP 56	56 x 10 x 2.5	B
100	IPHP 96	96 x 10 x 2.5	B

*MTO - Made to Order: Special on demand with MOQ.

Color = B-Black, W-White, Y-Yellow



Singapore

17 Neythal Road,

Singapore 628582

Tel: (65) 6416 1550

Fax: (65) 6416 1580

E-mail : customerhub.sg@legrand.com.sg

www.legrand.com.sg